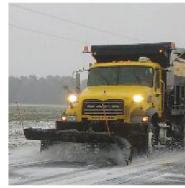


NORTH CAROLINA

Department of Transportation



Core Steering Committee (CSC) Meeting Brunswick County CTP

October 27, 2020

Introductions



Core Steering Committee (CSC) Members

- Patrick Flanagan, RPO Director, Cape Fear RPO
- Christopher Palsgrove, Transportation Engineer, NCDOT TPD
- Nazia Sarder, Transportation Engineer, NCDOT TPD
- Helen Bunch, Transportation Planner, Brunswick County
- Mark Hoeweler, Assistant Executive Director, Grand Strand Area Transportation Study MPO
- Daniel Newquist, Environmental Programs Manager, Grand Strand Area Transportation Study MPO
- Caitlin Marks, Division Planning Engineer, NCDOT Division 3
- Alan Pytcher, Division 3 Corridor Development Engineer, NCDOT Division 3
- Michael Madsen, Division 3 GIS Manager, NCDOT Division 3
- Abigail Lorenzo, Deputy Director, Wilmington MPO

Roles and Responsibilities

Core Steering Committee (CSC)

Cape Fear RPO

- Regional planning perspective
- Review documents
- Coordinating with all partners and facilitating meetings
- CUR with TPD



NCDOT TPD

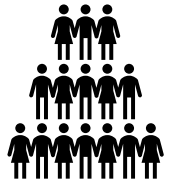
- Data collection and dissemination to Steering Committee and CSC
- Technical analysis
- Map production
- Report production
- CTP presentation, PI sessions, and leading adoptions

NCDOT Division 3

- Representing Division 3 perspective
- Reviewing data and documents. Providing input and updates
- Hosting internal division meetings for feedback to CTP committees

Roles and Responsibilities

Core Steering Committee (CSC)



Brunswick County

- County planning perspective
- Representing and coordinating with all municipalities
- Reporting CTP progress to County Officials, Director and Manager at the county, and technical staff at the county
- Communicating and updating all municipalities on a quarterly or semi-monthly basis. Keep all board/council members up to date
- Review data/documents and provide input

GSATS MPO

- GSATS MPO planning perspective
- Representing and coordinating with all municipalities in the MPO within Brunswick County
- Reporting CTP progress to MPO's TCC and TAC
- Review data/documents and provide input

Wilmington MPO

- Provide knowledge of area in WMPO: network roadways and multimodal

Overview of CTP Process

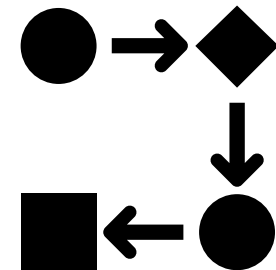
General Overview throughout CTP Process

Meetings Layout and Schedule

- Consistent meeting day and time
- Length of each meeting
- Consider two meetings per month (one review meeting and one decision meeting)
- Virtual meeting platform

CTP 2.0 Process

- Hybrid approach
- CTP 2.0 is still being developed
- We are one of the first CTPs in the state to start under CTP 2.0



Communication and Updates

Websites

Social Media

Newsletters

Suggested other platforms



Land Use Plan

- Brunswick County CAMA Core Land Use Plan adopted on October 15, 2007. Amended from 2009-2011.
- New Land Use Plan underway.
- Plan will be reviewed during:
 - Vision, Goals and Objectives (VGO)
 - Environmental Maps development
 - Community Understanding Report (CUR)
 - Highway Recommendations



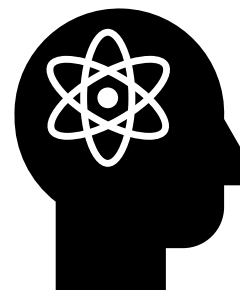
Additional Decision-Making Items

GSATS and WMPO

- MPO municipality involvement?

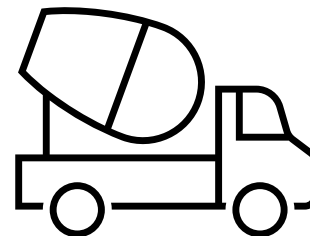
Steering Committee Discussion

- Too big?
- Encouraging participation



Division Internal Steering Committee

- Assist in Network Road selection
 - Federal Functional Classification
 - Additional important roads
- Assist in identifying Safety Improvement Project Locations
 - Strategic Highway Safety Plan
 - HSIP Map (Highway Safety Improvement Program)
 - Identify Division SPOT Safety projects
- Structure Deficiencies
 - Identify interstate/freeway constraints
 - Multi modal accommodation opportunities
- Volume and Capacity review
- Suggest and provide feedback on Highway Recommendations
 - Access management, operational improvements
 - Intersection improvements
 - Roundabout locations
 - Identify ROW issues and mitigate early on
 - Constructability - realism
 - Include high level cost estimates – this is outside of the scope of CTP
- Provide Local knowledge



Community Understanding Report (CUR)

- What's the purpose?
 - The CUR is to provide key information about the features of a planning area relevant for a CTP study and future development of transportation proposals.
- How will the information be used?
 - Identification of stakeholders, help in the development of a public involvement plan and planning public outreach during the CTP process
- Who is responsible?
 - All of us!
- When will it be finished?
 - Development of the CUR typically occurs concurrently with the CTP study.

Title VI Maps

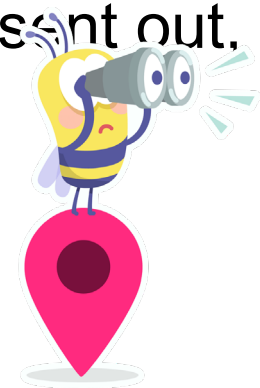
“No person in the United States shall, on the ground of race, color, or national origin, be excluded from participation in, be denied the benefits of, or be subjected to discrimination under any program or activity receiving Federal financial assistance.”

- In order to properly utilize federal funds and ensure equitable opportunity to participate in transportation planning
- Maps will be utilized in identifying the potential locations of public involvement sessions



Next Steps

- Feedback will be implemented
- First official CTP Meeting in November to Steering Committee
 - Potential Meeting Dates
- Second CTP Meeting will focus heavily on Vision, Goals and Objectives (VGO) and the VGO Survey.
- After the draft VGO, and prior to survey being sent out, we will present to locals.



—

Adjourn

Thank
You
AND
Good
Bye